

CDBF EXPLORER

DOCUMENTATION

version: 0.60

Documentation wrote by Eduard Pandichi <epandichi@yahoo.com>

What is CDBF Explorer?

CDBF Explorer is a freeware application that allows you to create dBase tables, to open existing tables, to modify contents of these, and also to do some other simple management operations (searching, applying filters, operations with indexes, etc).

CDBF Explorer engine is based on TDbf Component, and doesn't require any external database engines, such as BDE or ODBC. This engine is recommended for small and medium size tables. These sizes depends for your system, on CPU and RAM available.

CDBF Explorer uses:

Tdbf - database engine - <http://tdbf.sourceforge.net>

VtkExport Library - export Excel/HTML

© 2002 by vtkTools <http://www.vtktools.ru>

Inno Setup Generator 4.1.8. - creating setup files

© 1997-2004 Jordan Russell

<http://www.innosetup.com>

MENU AND OPTIONS:

1. File

- 1.1. New table*
- 1.2. Open*
- 1.3. Close*
- 1.4. Exit*

2. Edit

- 2.1. Copy*
- 2.2. Cut*
- 2.3. Paste*

3. Table

- 3.1. Show fields/indexes*
- 3.2. Export*
- 3.3. Search*
- 3.4. Filter*

4. Records

- 4.1. Add*
- 4.2. Delete / Recall (logical)*
- 4.3. Remove Records (Pack)*
- 4.4. Show deleted records*

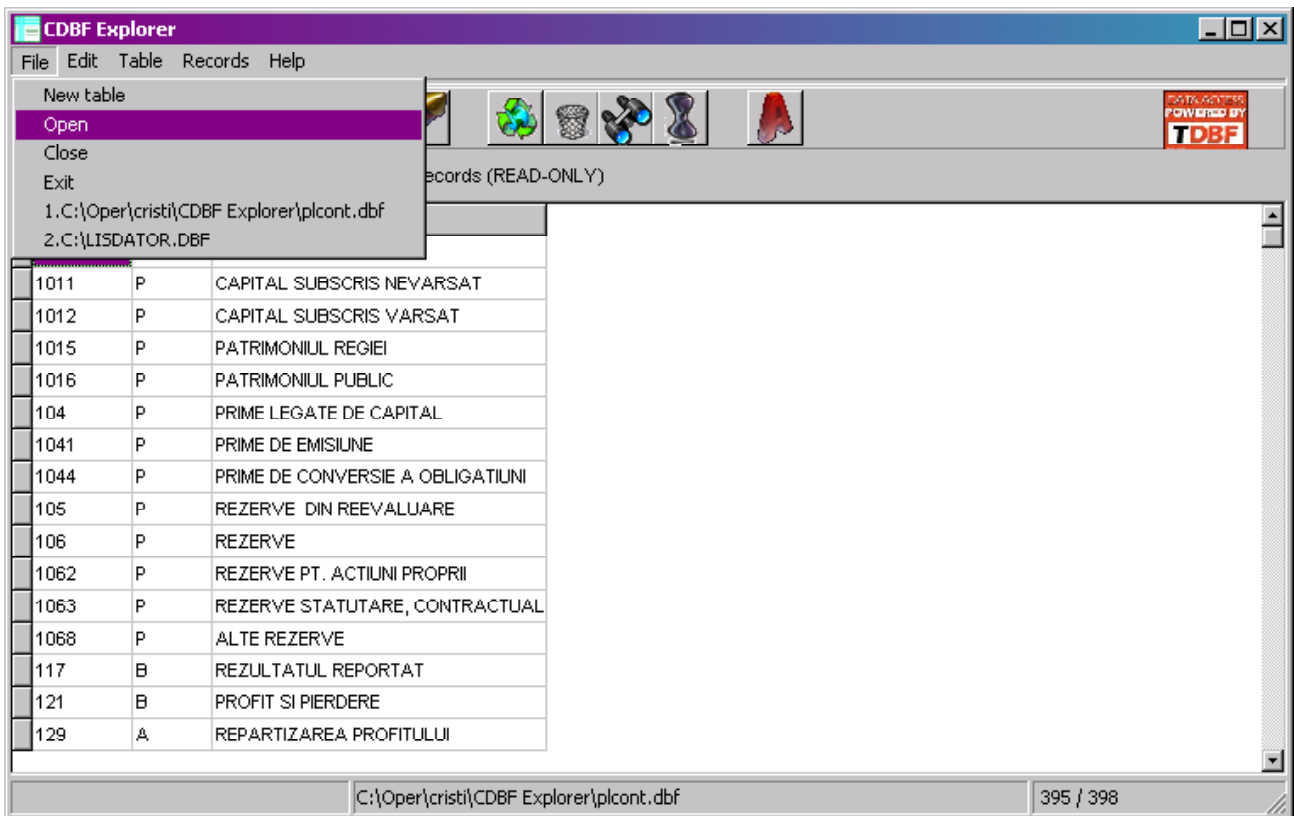
5. Help

- 5.1. About*

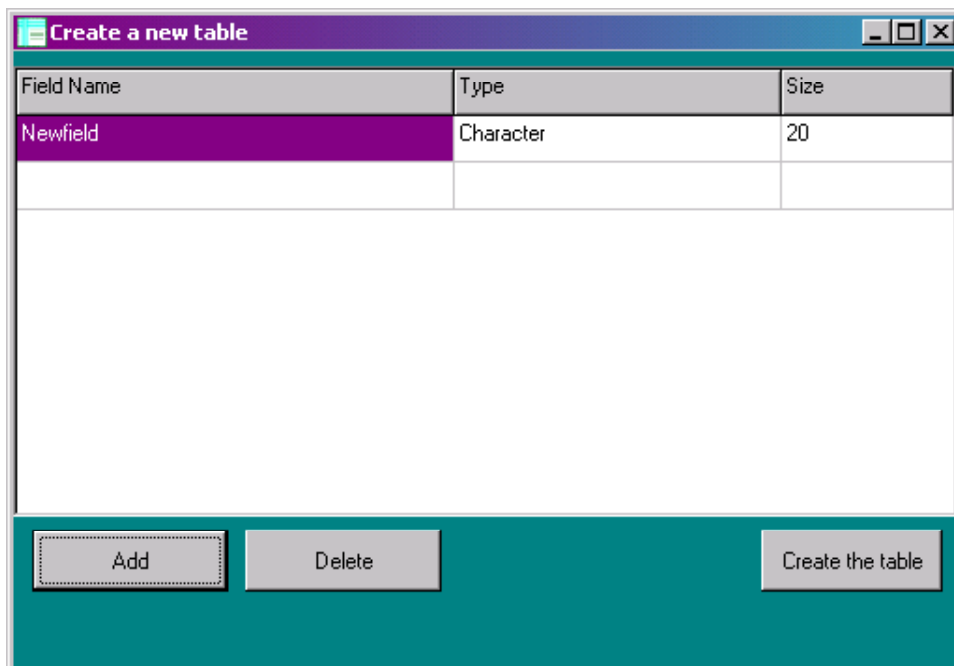
An additional choice to perform the options of this application is offered by the shortcuts bar.

There is also a possibility to change the size and font style in the grid.

FILE MENU



1.1. New table - allows you to create a new dbf table.



By accessing "Add" button you can also choose the name of fields

and their type (Character, Float, Integer, Date, Logical, Memo). If the field is “Character“ type, then you must supply the size for it. After you choose the fields and also the type of each field, with “Create the table“ option you can visualize the new created dbf table. In order to perform it, you must provide the right content for every field, according with the field type you chosen.

1.2. Open - opens a table with extension “dbf“ (dBase tables).

File format 100% compatible with dBASE III+, dBASE IV or dBASE for Windows. Supporting for Clipper and Visual FoxPro.

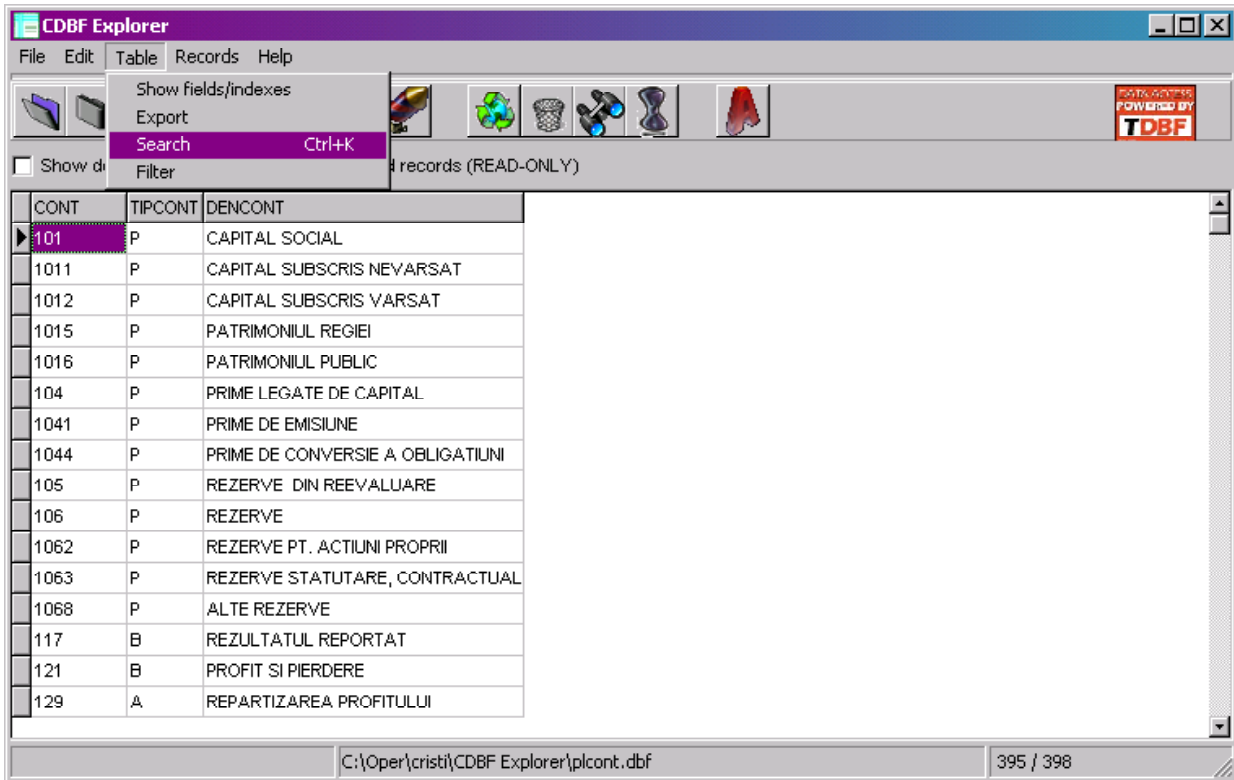
1.3. Close - closes the opened table but not the application.

1.4. Exit - closes any opened table and then exits the application.

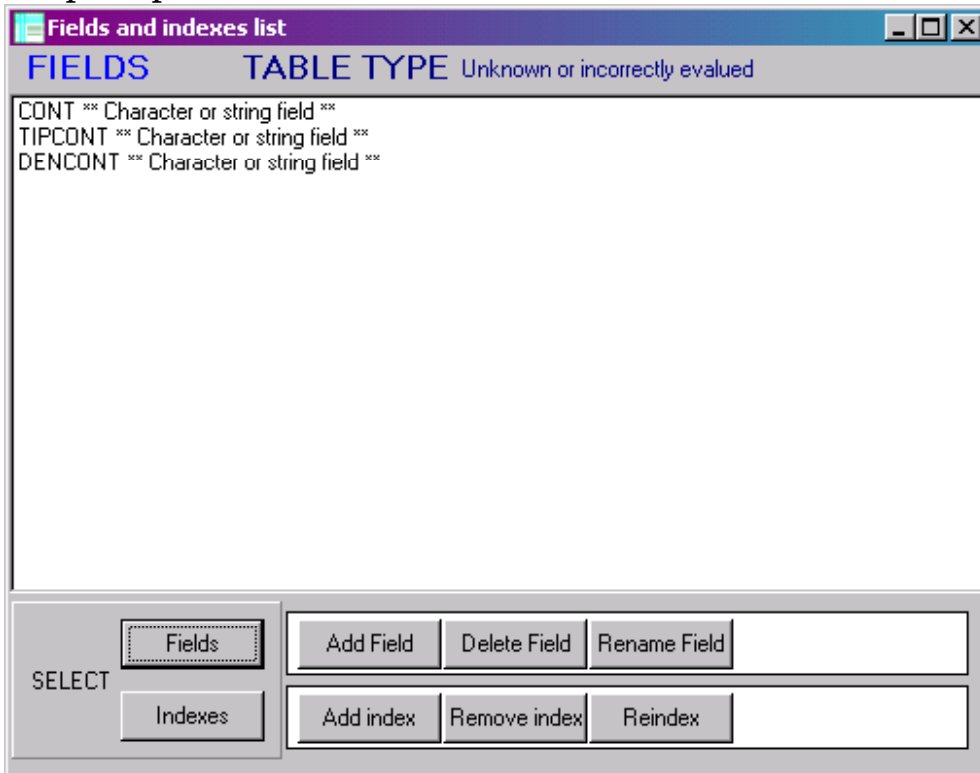
EDIT MENU

2.1. - 2.3. Edit - a simple menu for Cut/Copy/Paste operations.

TABLE MENU



3.1. Show fields/indexes - for viewing in a list and doing some simple operations on the indexes and fields.



This module has 2 types of viewing: Fields mode and Indexes mode. You can switch between them with the 2 buttons: “Fields“ and “Indexes”.

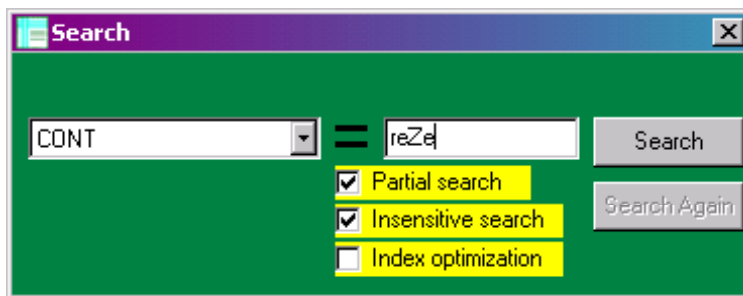
When you are in Fields viewing mode, you can add a field, delete fields or modify fields names. You can create 6 types of fields: Character, Float, Integer, Date, Logical and Memo. If the field is “Character“ type, then you must supply the size for it.

In the Indexes viewing mode, you can Delete an index or perform a "reindex" operation. To add an index, you must comute to Fields viewing mode, choose the fields to be indexed and press "Add index". You'll see then the new created index in the indexes list. You can't create indexes on every type of fields (ex: Memo fields can't be indexed).

You can view also the deleted records (“Show deleted records“) or only the deleted records (“Show only deleted records“).

3.2. Export - is a function which allows you to export a dbf to Excel, to HTML, to CSV (Coma Separated Values) and also to Text Files format.

3.3. Search - search for a value in a field.



First you must select the field in which the search is about to be made, then you must type the key word you want to find and the cursor will be positioned on the first record found. You can continue the search, pressing “Search Again“. If you reach the end of the table, you'll be notified.

You have some options here:

- **Partial search** - searching only for a part of expressions.

(Example: search for “del“ will return “delete“ or “undelete“);

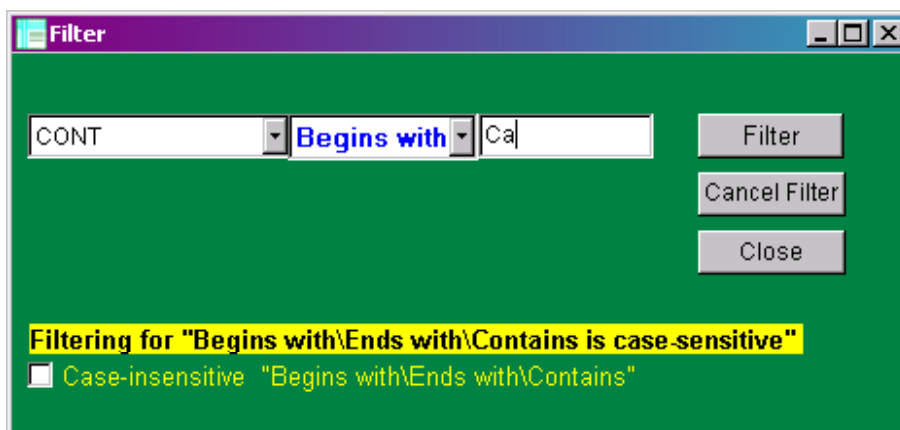
- **Insensitive search** - to ignore the case of characters (Ex: e or E will be the same);

- **Index optimization** - If you have an index associated with a field, you can optimize the search. But, in this case, options “Partial search“ and “Insensitive search“ will be not available.

To perform an accurate search, you can select just one search option or multiple as well.

As an additional information, you have to notice the fact that if searching process is not based on the indexes, in case of big tables, it can be a slow process.

3.4. *Filter* - allows to filter information with different conditions.

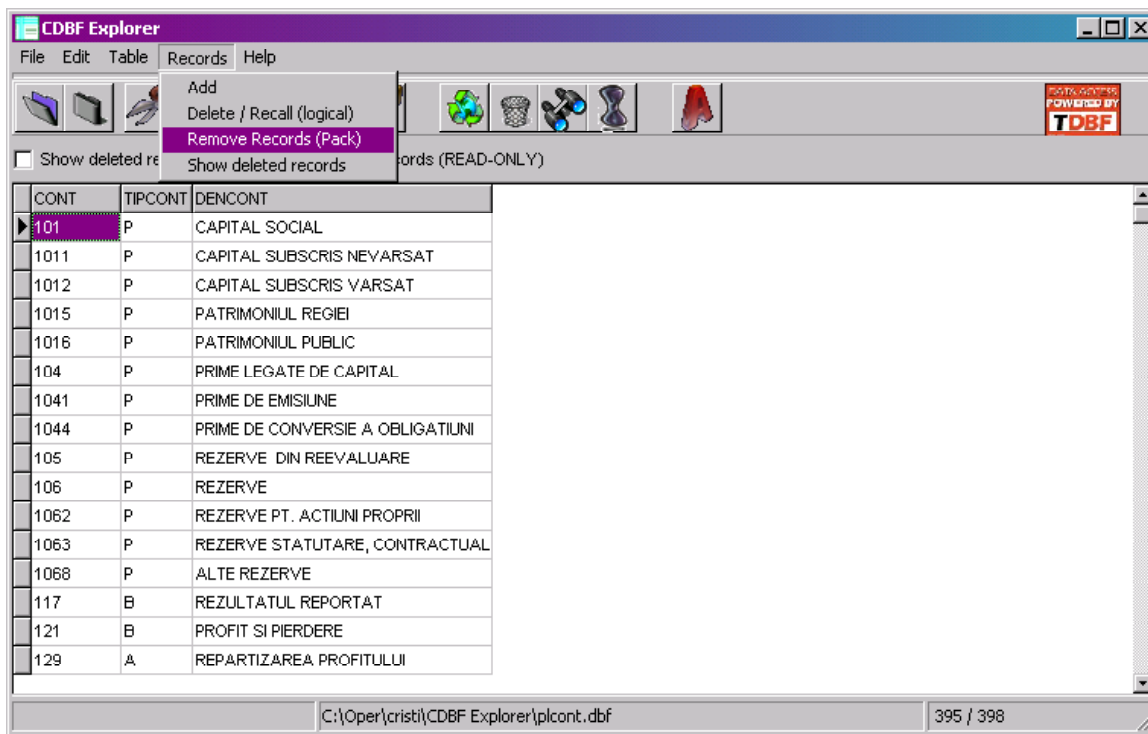


Filters can be applied on every field from a table. There are 8 operators: =, <, <=, >, >=, Begins with, Ends with, Contains. After you select the field, you type the wanted word and you choose the operator, by pressing “Filter“ you'll have on the screen only the filtered combination.

Compared with the last versions is case-sensitively. If you don't want this, you must marked the option: “Case insensitive for Begins with\Ends with\Contains“.

You can reset the applied filter, pressing “Cancel Filter“. On “Close“, the filter will be canceled by default.

RECORDS MENU



4.1. Add - for adding a blank record to the end of the table.

4.2. Delete/Recall (logical) - delete a record.

It's a logical deletion because the size of the table remains the same, the record being just marked for deletion. You can also delete a record pressing the "Delete" key in the grid.

If the "Show deleted records" mode is on, and you press the Delete key on a deleted record, that record will be recall from its deletion state (it become active).

4.3. Remove records (PACK) - Pack will remove all the records marked for deletion. The size of the table will be modified.

4.4. Show deleted records - allows you to view also the records you previously deleted.

This document is part of the CDBF Explorer application.
CDBF Explorer application is offered "as is", with no warranty from its author.
The author will be not liable for
any damages or injury that accompany or result from your use of this product.
Please report the bugs at the email address below.
You can contact me for any problem on CDBF Explorer at
crisi_navalici@yahoo.com Christian Navalici.
I hope you enjoy my work!